

STANDARD IMAGING®



# ABSOLUTE DOSIMETRY

THE FUTURE IS ELITE



MAX ELITE™

PATENT PENDING

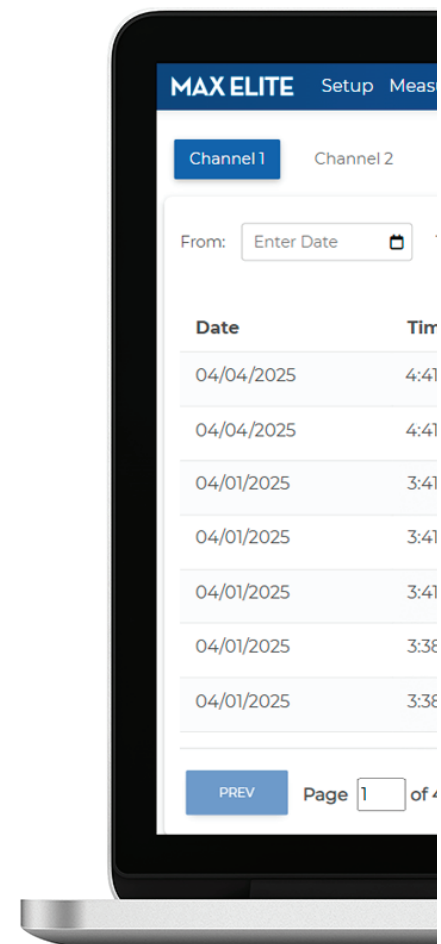
# ABSOLUTE DOSIMETRY

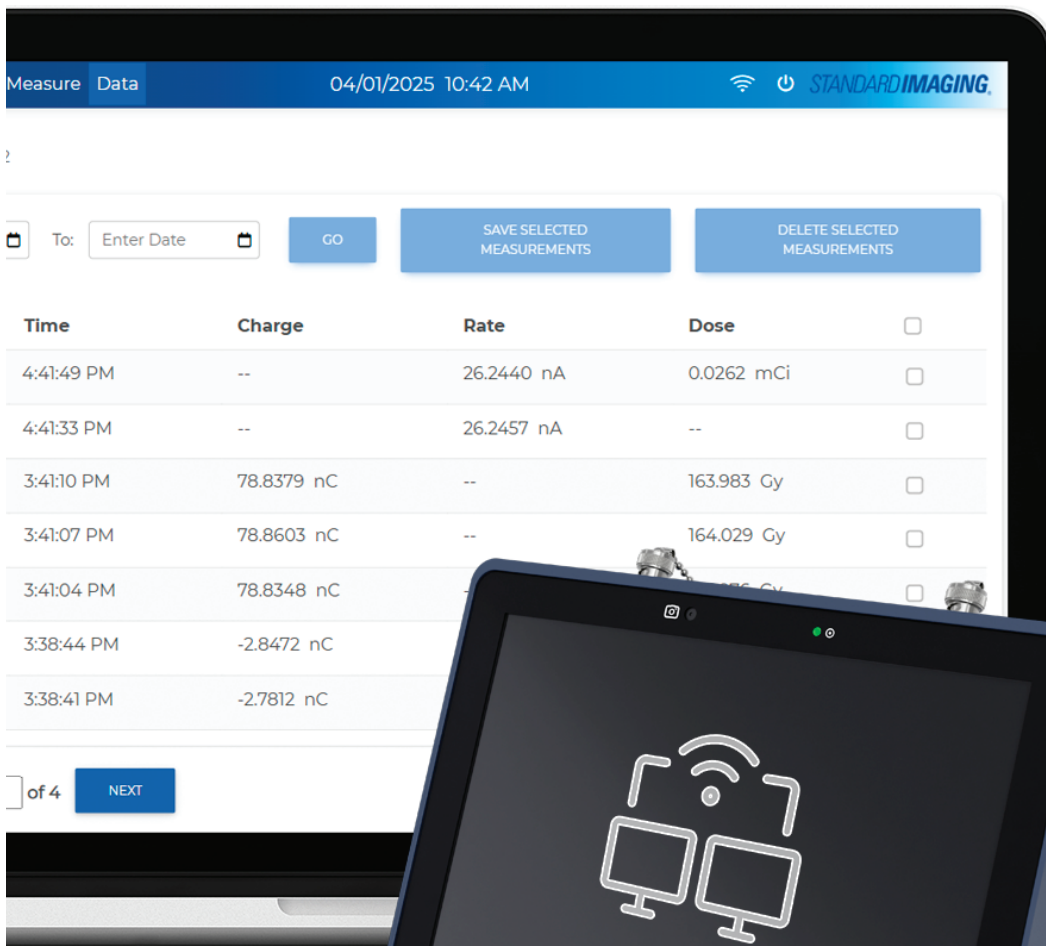
## MAX ELITE

### BUILDING THE FUTURE

*The foundation for evolving technologies*

This electrometer isn't just a device — it's the foundational platform for tomorrow's advancements. Engineered to integrate new technologies and support emerging therapies, it delivers unmatched precision and flexibility through cutting-edge technology. Unlock new possibilities in care with a tool designed to evolve alongside you.





# ABSOLUTE DOSIMETRY

## THE FUTURE IS ELITE

WHERE PRECISION MEETS PERFORMANCE.

THE PREMIER, REFERENCE-CLASS ELECTROMETER.

### STREAMLINED SETUP, MAXIMUM EFFICIENCY

Get up and running quickly with an intuitive interface that makes measurements and adjustments seamless.

### PRECISION AT YOUR FINGERTIPS

The largest capacitive touch screen on the market delivers quick, responsive touch control—no stylus needed.



THE CHOICE FOR PRECISION.

THE STANDARD FOR QUALITY.

# STANDARD IMAGING®



## FAST RESPONDING

Fast-settling and fast-zeroing features that deliver both speed and precision for quick, reliable data collection.

## FLEXIBILITY REDEFINED

Make use of the remote operation capability or set your optimal screen angle for maximum viewing flexibility.

[Remote operation available on the MAX Elite 2]

Largest touch screen on the market.

Intuitive interface.

High precision measurements.

# ABSOLUTE DOSIMETRY

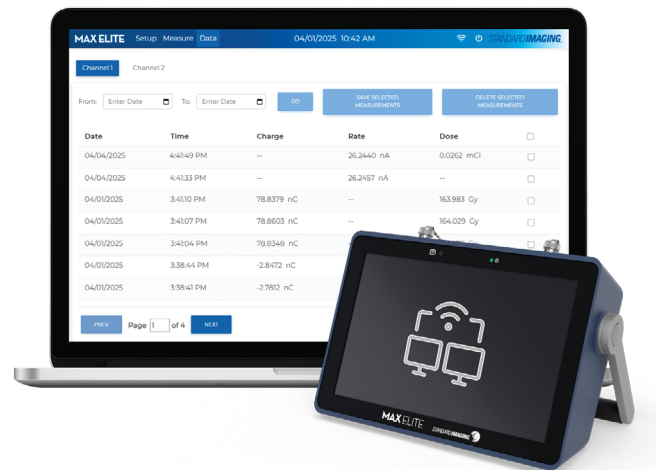
## THE NEXT EVOLUTION ELECTROMETER

### ACCESS MADE SIMPLE

One Interface, Any Location

[Available on the MAX Elite 2]

Remote operation allows the user to connect directly to the MAX Elite software through a browser on a computer. Access the device and operate a mirror of the interface with a mouse and keyboard.

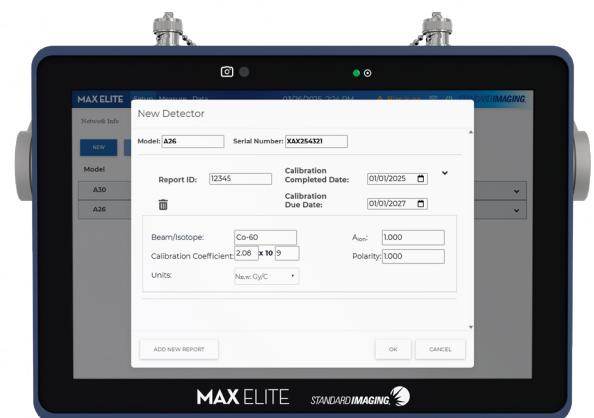


### CALIBRATION MADE SMARTER

From Data Matrix to Database in Seconds

[Available on the MAX Elite 2]

Say goodbye to manual data entry! The advanced camera system scans the data matrix code (DMC) on your chamber's calibration certificate and instantly auto-fills key detector details—calibration factor, date, name, and serial number—directly into your database.





## MAX ELITE SPECIFICATIONS

**CHANNELS** — 1 channel (MAX Elite 1), 2 channels (MAX Elite 2) or 4 channels (MAX Elite 4) – factory configurable.

**DIMENSIONS** — [ length × width × height ] 26.7 cm (10 in) × 8.1 cm ( 7 in) × 21.1 cm ( 5.5 in)

**WEIGHT** — 2.3 kg (5.05 lbs) (4-channel) // **MODE OF OPERATION** — Continuous, Timed, or Triggered

**DISPLAY** — Color LCD IPS touch screen. WXGA (1280x800) resolution, 10.1" diagonal

**INPUT CONNECTION** — BNC two lug triaxial connector (TNC option is available.)

**ZEROING** — Zero via button push - Display indicates zeroing in progress 1-30 seconds.

**FOR THE MAX ELITE 2 & 4: CODE READER** — Data matrix code reader for easy detector calibration input

**MAIN SOFTWARE FUNCTIONS** — Measurement for Channel 1, Chamber Library; Check Source Database  
For MAX Elite 2 & 4: Individual measurement for Channel 1, Channel 2, Channel 3, or Channel 4; Channel 1 & 2 measurement; Four Channel measurement

**CONNECTIVITY** — Ethernet 10/100Mbit; USB 2.0 (keyboard, flash drive, or mouse support);  
Wi-Fi Dual Band 2.4/5GHz, 802.11ac/a/b/g/n.

**REAL-TIME CLOCK** — On board, for timekeeping and data time stamp. // **AUDIO** — On board speaker for audio feedback

**POWER REQUIREMENTS** — 100-240 VAC, 50/60 Hz input to external power supply, 9 VDC, 2.0 A power supply output to electrometer input, Globtek®, Inc. model GTM 96180-1811-2.0-T.

**PRODUCT STANDARDS** — IEC 60601-1-2 Edition 4.1:2020, IEC 60601-1-6:2010/AMD2:2020, IEC 60601-1:2005/AMD2:2020,  
IEC 60731 (Reference Class)<sub>2</sub>

### MEASURING RANGE IEC60731 REFERENCE CLASS

**LOW** — 0.4000 pA - 1.0000 nA, 0.4000 pC – 100 mC // **HIGH** — 0.0400 nA - 1.0000 µA, 0.0400 nC – 100 C

**BIAS VOLTAGE** — 0, (±) 10 - 450 V in 1 V increments; 10-24VDC +/- 10%; 25-49VDC +/- 5%; 50-450VDC +/-1%  
For the MAX Elite 2 & 4: 0, (±) 10 - 1000 V in 1 V increments; 10-24VDC +/- 10%; 25-49VDC +/- 5%; 50-1000VDC +/-1%

**RANGE SWITCHING** — User selectable – High and Low // **CURRENT INPUT** — 400 fA - 1 uA

### SELECTABLE DISPLAY RESOLUTION

**LOW** — Rate mode/Charge mode — 0.001 pA / 0.001 pC  
For the MAX Elite 2 & 4: 0.001 pA / 0.001 pC or 0.0001 pA / 0.0001 pC

**HIGH** — Rate mode/Charge mode — 0.001 nA / 0.001 nC or 0.0001 nA / 0.0001 nC  
For the MAX Elite 2 & 4: 0.001 nA / 0.001 nC or 0.0001 nA / 0.0001 nC

### REPEATABILITY

**LOW RANGE** — ≤ +/-0.25% // **HIGH RANGE** — ≤ ± 0.15% // **LONG TERM STABILITY** — ≤ ± 0.5% over 1 year

**STABILIZATION TIME** — ≤ ± 0.1% // **NON-LINEARITY** — ≤ ± 0.25% // **ZERO DRIFT** — ≤ ± 0.25% // **ZERO SHIFT** — ≤ ± 0.25%

**RESPONSE TIME (90%)** — Low range rate: 2.20 seconds, High range rate: 2.20 seconds  
Low range charge: 1.95 seconds, High range charge: 0.26 seconds

### CHARGE COLLECTION MODES

**TIMED MODE** — Selectable timer from 1 to 86400 seconds in 1 second increments. 500 repeated collections.

**CONTINUOUS MODE (Manual Start/Stop)** — Press Start to begin collection and Stop to end

**TRIGGER MODE** — current exceeding pre-selected trigger values starts measurement, and current below pre-selected stop trigger value stops collection

**TIMER RESOLUTION** — 1 second

**TRIGGER LEVELS FOR CHARGE COLLECTION** — Start value must be larger than stop value. Low Range 10 fA – 1 nA.  
High Range 10 pA – 10 nA

### OPERATING PARAMETERS

**TEMPERATURE** — 15 to 35 °C // **RELATIVE HUMIDITY** — 20 to 80% non-condensing

### STORAGE PARAMETERS

**TEMPERATURE** — -15 to 50 °C // **RELATIVE HUMIDITY** — 10 to 95% non-condensing

### CHAMBER LIBRARY CALIBRATION COEFFICIENTS

**AMPERE SYSTEM FACTORS** — Nsk:µGym<sup>2</sup>/(h\*A); Nsk:Gym<sup>2</sup>/(h\*A); Nx,sk:Rm<sup>2</sup>/(h\*A); NA:GBq/A; NA:Ci/A; ND,W:mGy/(sec\*A);  
NA:MBq/A; NA:mCi/A

**COULOMB SYSTEM FACTORS** — Nk:Gy/C; Nx:R/C; NGas:Gy/C; ND:Gy/C; ND,W:Gy/C

*1 Externally Certified; 2 Designed to Meet; Specifications subject to change without notice.*

*MAX Elite 4 has all features of the MAX Elite 2*

# ABSOLUTE DOSIMETRY

**STANDARD IMAGING**



[www.standardimaging.com](http://www.standardimaging.com)

**800-261-4446** . PH 608-831-0025 . FAX 608-831-2202

3120 Deming Way Middleton WI 53562-1461 USA

© 2025 Standard Imaging, Inc.

1452-00 (4.25)